

Lounge Chair

Charles & Ray Eames, 1956

vitra.



Lounge Chair (classic version)



Lounge Chair (white version)



Lounge Chair (black version)

‘Why don’t we make an updated version of the old English club chair?’ With this comment, Charles Eames initiated the development of the Lounge Chair, a process that took several years. The aim was to satisfy the desire for an amply proportioned chair that combined ultimate comfort with the highest quality materials and craftsmanship. With the design of this armchair in 1956, Charles and Ray Eames set new standards: it is not only lighter, more elegant and more modern than the conventionally ponderous club chair – it is also more comfortable. Thanks to these qualities, the Lounge Chair became one of the most famous designs of Charles and Ray Eames and has attained the status of a classic in the history of modern furniture.

Lounge Chair (classic version)

For the classic version of the Eames Lounge Chair, there are a variety of options to choose from: various types of wood for the shells, a selection of leather grades and colours, and several surface finishes for the base. If the Lounge Chair is ordered together with the Ottoman, the grain on the wooden shells of both pieces will be matched during the production process; this is not possible if they are ordered separately.

Lounge Chair (white version)

Ever since it was first launched, the Lounge Chair has been manufactured in different variations. Although there was a recurrent demand for a version with white upholstery, white models were only produced infrequently as special editions.

The new interpretation of this classic armchair in a light, graceful version was developed by Vitra in collaboration with the Eames Office and Dutch designer Hella Jongerius. All of the chair’s components are coordinated, from the zipper fasteners to the backrest spacers to the glides on the base. The off-white leather cushions fit snugly into shells of walnut veneer with a light-coloured stain; the aluminium base and back braces have a polished finish.

Lounge Chair (black version)

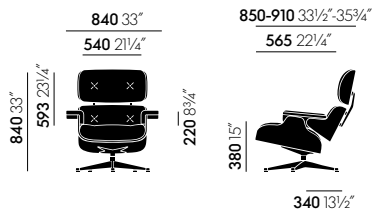
‘What I really want is a black with feeling.’
– Charles Eames

All elements of the black Lounge Chair – ash shells, leather upholstery and aluminium components – are completely finished in black, lending an air of dignified refinement to this version of the legendary armchair.

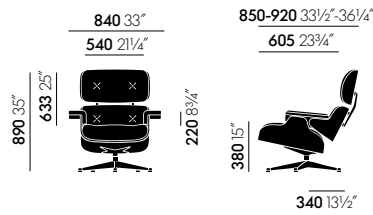
Materials

- **Seat and back:** moulded plywood, different face veneers. Standard version in cherry, santos palisander (certified sustainability) or walnut with a black pigmented finish. White version: walnut with a white pigmented finish. Black version: ash with a black lacquer finish.
- **Upholstery/cover:** removable cushions, covers in Premium or Grand leather, black version only in Premium leather.

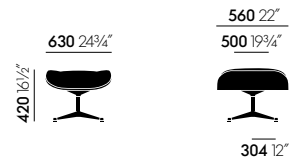
DIMENSIONS (in accordance with EN 1335-1)



Lounge Chair, classic dimensions

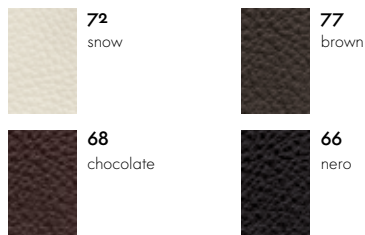


Lounge Chair, new dimensions

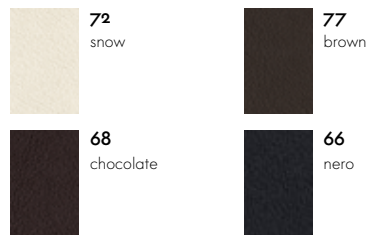


Lounge Chair Ottoman

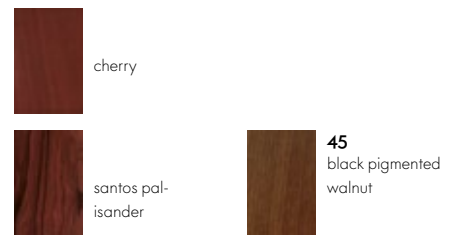
Surfaces and colours



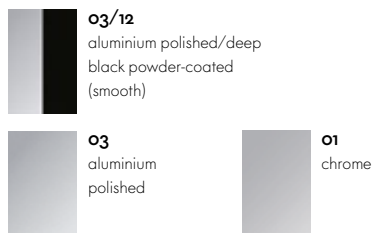
Cover material Leather Grand (Lounge Chair classic version)



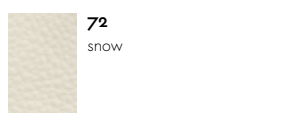
Cover material Leather Premium (Lounge Chair classic version)



Seat and back shell (Lounge Chair classic version)



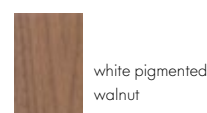
Base (Lounge Chair classic version)



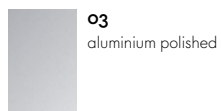
Cover material Leather Grand (Lounge Chair white version)



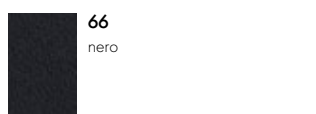
Cover material Leather Premium (Lounge Chair white version)



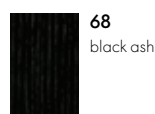
Seat and back shell (Lounge Chair white version)



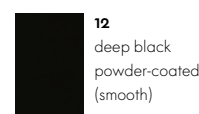
Base (Lounge Chair white version)



Cover material Leather Premium (Lounge Chair black version)



Seat and back shell (Lounge Chair black version)



Base (Lounge Chair black version)

