

Tabouret Solvay

Jean Prouvé, 1941

vitra.



Tabouret Solvay

Tabouret Solvay is a simple, robust stool made of solid wood that reveals the designer's signature at first glance: its clear structural principles can be found throughout the work of Jean Prouvé. Thanks to the flat, even surface of the seat, Tabouret Solvay can also be used as a small side table.

Materials

- **Seat** and base: solid wood with oiled finish in natural oak, core smoked oak or American walnut; connecting element made of sheet steel, powder-coated (smooth) in deep black.

DIMENSIONS (in accordance with EN 1335-1)

Ø350 Ø13³/₄"



Ø350 Ø13³/₄"



400 15³/₄"

Tabouret Solvay

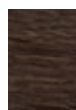
Surfaces and colours



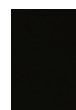
70
natural oak solid
oiled



75
American walnut
solid oiled



90
smoked oak solid
wood oiled



12
deep black
powder-coated
(smooth)

Seat and base

Linking elements

